

Company Profile

TOPSCCC Technology CO., LTD.

Founded in 1987, TOPSCCC is a global leading automation platform services provider of computing platforms and customization services, web-based technology to empower innovations in the connected **Automation's/ Embedded platform's/ Applied Computing's** world.

TOPSCCC cooperates closely with solution partners to provide complete solutions for a wide range of applications in industrial field.

TOPSCCC offers many different products and solutions with best team for support, sales, marketing network to fast services to our every customers.

TOPSCCC's market & product cover product Automation, Machine Automation, Building Automation, Environmental Monitoring, Facility Management System, Intelligent Transportation, Power & Energy and product offerings: **Industrial I/O & Controllers, Industrial Communication, Industrial panel and HMI Computers, Automation software.**

TOPSCCC focuses **Channel partners and Solution partners and Technology/Product partners** to provide complete, reliable, fast-to market solutions for a wide variety of industries world. (Certified service and products with)

TOPSCCC Global Services:

Manufacturing, Designation, Solution Integration, Support, Configuration.

Contact us : topscce.com ExpertDAQ.eu topscce.com.tw





Converter

EX9510/A (RS485/422 Repeater)



- Automatic internal RS485(EX9510); RS485/422(EX9510A) bus supervision
- No external flow control signals required for RS-485

EX9520/A/R/AR (RS232 to RS485/422 Converter)



- Input: RS-232 protocol
- Speed: "AutoPro" designed auto switch baud rate, 300~115200Bps
- 256 modules max. in one RS-485 network without repeater

Serial products:

	422	485	Isolate	Repeater
EX9520		~	232	
EX9520R		~	485	
EX9520A	~	~	232	
EX9520AR	~	~	422/485	
EX9510		~	485	~
EX9510A	~	~	422/485	~

* EX9520AR+ :Power Input 10 ~ 48V optional

EX9530 (USB to RS232/422/485 Converter)



- USB to RS-485/422/232 (isolated),RS-232 handshake
- Auto direction flow control on RS-485
- Full-Duplex RS-232/RS-422 support
- Minimum 3000 VDC isolation protection

EX9531 (USB to RS485/422 Converter)



- USB to RS-485/RS422 (isolated),RS-422 handshake
- Auto direction flow control on RS-485
- Full-Duplex RS-422 support
- Minimum 3000 VDC isolation protection



D I/O with Counter

EX9041D/ EX9041D-M



- Digital I/P channel: 14 Single-ended
- Dual Watchdog Timer
- Power Input: +10V to 30VDC
- Power Consumption: 0.9W
- Operating Temp: -25~75°C
- **M:Modbus support**

EX9042D/ EX9042D-M



- Digital O/P Channel: 13 open collector
- Dual Watchdog Timer
- Power Input: +10V to 30VDC
- Power Consumption: 1.7W
- Operating Temp: -25~75°C
- **M:Modbus support**

EX9043D/ EX9043D-M



- Digital O/P Channel: 16 open collector
- Load Voltage: Max to +30V
- Max Load current: 100mA
- **M:Modbus support**
- Others:EX9041D/41D-M/42D/42D-M/44D/44D-M

EX9044D/ EX9044D-M



- Digital O/P Channel: 8 open collector
- Digital I/P Channel: 4 Single-ended
- Dual Watchdog Timer
- Power Input: +10V to 30VDC
- Power Consumption: 1.7W
- Operating Temp: -25~75°C
- **M:Modbus support**

EX9050HD-M/ EX9050AHD-M



- Digital O/P Channel: 8 NPN/ PNP
- Digital I/P Channel: 8 Source/ Sink
- Dual Watchdog Timer
- Power Input: +10V to 30VDC
- Power Consumption: 1.7W
- Operating Temp: -25~75°C
- **M:Modbus support**

EX9052D/ EX9052D-M



- Digital I/P Channel: 8
- Differential *6; Single-ended *2
- Dual Watchdog Timer
- Power Input: +10V to 30VDC
- Power Consumption: 0.6W
- Operating Temp: -25~75°C
- **M:Modbus support**



EX9053D/ EX9053D-M



- Digital I/P Channel: 16 single-ended
- Dual Watchdog Timer
- Digital Level 0: 2V Max
- Digital Level 1: 4V to 30V
- Input Impedance: 820 Ohms
- **M:Modbus support**

D I/O with Counter/freq

EX9080R/ RD/ R-M/ RD-M



- (EX9080R) 2 counter input,(isolated) 2 DO (open collector)
- (EX9080RD) 2 counter input,(isolated) 2 DO (open collector),7 segment LED
- (EX9080R-M) 2 counter input,2 DO (open collector); w/ Modbus function
- (EX9080RD-M) 2 counter input,2 DO (open collector), 7 segment LED; w/ Modbus function

D I/O Relay with Counter

EX9060D/ EX9060D-M



- 4 DI, 4 relay output, LED
- Dual Watchdog Timer
- Relay type 0.6A/2A@125VAC/30VDC
- **M:Modbus support**
- Others:EX9066D/67D/67D-M

EX9063D/ EX9063D-M



- 8 DI, 3 relay output, LED
- Dual Watchdog Timer
- Power Input: +10V to 30VDC
- Power Consumption: 1.5W
- Operating Temp: -25~75°C
- Relay type 5A@250VAC/30VDC
- **M:Modbus support**

EX9063AD/ EX9063AD-M



- 8 DI, 3 relay output, LED
- Dual Watchdog Timer
- Power Input: +10V to 30VDC
- Power Consumption: 1.5W
- Operating Temp: -25~75°C
- Relay type AC-SSR Normal Open
- **M:Modbus support**



EX9063BD/ EX9063BD-M



- 8 DI, 3 relay output, LED
- Dual Watchdog Timer
- Power Input: +10V to 30VDC
- Power Consumption: 1.5W
- Operating Temp: -25~75°C
- Relay type DC-SSR Normal Open
- **M:Modbus support**

EX9065D/ EX9065D-M



- 4 DI, 5 relay output, LED
- Dual Watchdog Timer
- Relay type 5A@250VAC/30VDC
- **M:Modbus support**

EX9065AD/ EX9065AD-M



- 4 DI, 5 relay output
- EX9065AD AC-SSR Normal Open
- Dual Watchdog Timer
- Input Impedance: 3K Ohms
- **M:Modbus support**

EX9065BD/ EX9065BD-M



- 4 DI, 5 relay output
- EX9065BD DC-SSR Normal Open
- Dual Watchdog Timer
- Input Impedance: 3K Ohms
- **M:Modbus support**

EX9067D/ EX9067D-M



- Digital O/P Channel: 7
- Dual Watchdog Timer
- Power Input: +10V to 30VDC
- Power Consumption: 1.5W
- Operating Temp: -25~75°C
- Relay type 0.5A/1.0A@120VAC/24VDC
- **M:Modbus support**

EX9068D-M



- 8 relay output, LED
- Dual Watchdog Timer
- Relay type 0.5A/1.0A@120VAC/24VDC
- Power Input: +10V to 30VDC
- **M:Modbus support**

Analog I/P

EX9018-M/ EX9018BL-M/ EX9019-M



- EX9018-M 8 AD, 16-bit, 10Hz, Thermocouple
- EX9018BL-M 8 AD, 16-bit, 10Hz, Thermocouple , Open loop detection
- EX9019-M 8 AD, 16-bit, 10Hz, Thermocouple , Open loop detection, individual channel configuration
- **M:Modbus support**



EX9015/ EX9015-M/ EX9015H-M (Filter:50/60Hz Rejection)



- Resolution/Sampling: 16bit/12Hz
- Analog I/P channel: 6 diff
- RTD:Pt,Ni,Cu,(2/3/4 wire)
- Individual channel configuration
- Off-set value setting by Utility of EX9000 for individual channel,
- Break line detection
- Parity type support None/Even/Odd
- Dual Watchdog Timer
- Power I/P: +10V to +30V
- Power Consumption: 1W
- Operating Temp: -25~75°C
- **M:Modbus support**

EX9017/ EX9017-M



- Resolution/Sampling: 16bit/10Hz
- Analog I/P channel: 8 diff
- Dual Watchdog Timer
- Power I/P: +10V to +30V
- Power Consumption: 1.3W
- Operating Temp: -25~75°C
- **M:Modbus protocol**

EX9017F/ EX9017F-M/ EX9017H-M (w/individual config)



- Resolution/Sampling: 16bit/10Hz ; 12bit/50~60Hz
- Analog I/P channel: 8 diff
- Dual Watchdog Timer
- Power I/P: +10V to +30V
- Power Consumption: 1.3W
- Operating Temp: -25~75°C
- **M:Modbus protocol**

EX9017R/ EX9017R-M



- Resolution/Sampling: 16bit/10Hz
- Analog I/P channel: 8 diff
- Dual Watchdog Timer
- Power I/P: +10V to +30V
- Power Consumption: 1.3W
- Operating Temp: -25~75°C
- Over voltage protection 240Vrms
- **M:Modbus protocol**

EX9017FR/ EX9017FR-M



- Resolution/Sampling: 16bit/10Hz ; 12bit/50~60Hz
- Analog I/P channel: 8 diff
- Dual Watchdog Timer
- Power I/P: +10V to +30V
- Power Consumption: 1.3W
- Operating Temp: -25~75°C
- Over voltage protection 240Vrms
- **M:Modbus protocol**



EX9033P/ EX9033P-M



- Resolution/Sampling: 16bit/15Hz
- Analog I/P channel: 3 diff
- RTD:Pt,Ni,Cu,(2/3/4 wire)
- Individual channel configuration
- Off-set value setting by Utility of EX9000 for individual channel
- Dual Watchdog Timer
- Power I/P: +10V to +30V
- Power Consumption: 2.5W
- Operating Temp: -25~75°C
- **M:Modbus protocol**

EX9036P/ EX9036P-M



- Resolution/Sampling: 16bit/12Hz
- Analog I/P channel: 6 diff
- RTD:Pt,Ni,Cu,(2/3/4 wire)
- Individual channel configuration
- Off-set value setting by Utility of EX9000 for individual channel
- Dual Watchdog Timer
- Power I/P: +10V to +30V
- Power Consumption: 1W
- Operating Temp: -25~75°C
- **M:Modbus protocol**

EX9033/ EX9036-M



- (EX9033) 3 AD,16-bit, 15Hz,RTD:Pt,Ni,Cu,(2/3/4 wire), open loop detection ,off-set func.
- (EX9036-M) 6 AD,16-bit, 12Hz,RTD:Pt,Ni,Cu,(2/3/4 wire), open loop detection , off-set ,Modbus
- Others:EX9033-M/33P-M/36P/36P-M/15-M

Analog O/P

EX9021/ EX9021P/ EX9022



- Resolution: 16bit
- Analog O/P Channel: 1(9021), 2(9022)
- Power-on Value
- Dual Watchdog Timer
- Power I/P: +10V to +30V
- Power Consumption: 2W
- Operating Temp: -25~75°C

EX9024/ EX9024-M/ EX9024H-M (w/DI*4)



- Resolution: 14bit
- Analog O/P Channel: 4
Voltage O/P: +/-10V, 0~10V, +/-5V, 0~5V
Current O/P: 0~20mA, 4~20mA
Safe Value (when host fail)
Power-on Value
- Dual Watchdog Timer
- Power I/P: +10V to +30V
- Power Consumption: 2W
- Operating Temp: -25~75°C
- **M:Modbus support**

ODM I/O Module

EX9055D-M/ EX9051D-M



- EX9055D-M 8 DI (Isolated)(common source/ground), 8 DO (Isolated, open Source(N-MOSFET),LED , **Modbus**
- EX9051D-M 16DI(Isolated) (common source/ground), **Modbus**

Addressable RS485 to RS232 controller

EX952N Series



- Built in "Addressable RS485 to RS232 Controller" firmware
- Watchdog timer provides fault tolerance and recovery

Model No.	EX9521D	EX9522D	EX9523D	EX9524D	EX9527D
COM1	RS232(5wire)	RS232(5wire)	RS232(5wire)	RS232(5wire)	RS232(5wire)
COM2	RS485	RS485	RS485	RS485	RS485
COM3	x	RS232(3wire)	RS232(3wire)	RS232(3wire)	RS232(3wire)
COM4	x	x	RS232(3wire)	RS232(3wire)	RS232(3wire)
COM5	x	x	x	RS232(3wire)	RS232(3wire)
COM6	x	x	x	x	RS232(3wire)
COM7	x	x	x	x	RS232(3wire)
COM8	x	x	x	x	RS232(3wire)

COM1: Program download RS232 (5wire) EX9524D, EX9527D.
COM4: Program download RS232 (3wire) EX9521D, EX9522D, EX9523D.

Industrial embedded controller

EX9188XD Series



- EX9188XD Series : Support 4/5/8 RS232/RS485 devices
- COM4 Can be used to download program and can be RS232 port
- Watchdog support for system recovery

Model	EX9188AD	EX9188AD-512	EX9188A5D	EX9188A5D-512	EX9188A8D	EX9188A8D-512
Flash	512K	512K	512K	512K	512K	512K
SRAM	256K	512K	256K	512K	256K	512K
RTC	v	v	v	v	v	v
COM1	RS232/485 *1	RS232/485 *1	RS232(5wire) *2	RS232(5wire) *2	RS232(5wire) *2	RS232(5wire) *2
COM2	RS485	RS485	RS485	RS485	RS485	RS485
COM3	RS232(3wire)	RS232(3wire)	RS232(3wire)	RS232(3wire)	RS232(3wire)	RS232(3wire)
COM4	RS232(3wire) *2	RS232(3wire) *2	RS232(3wire)	RS232(3wire)	RS232(3wire)	RS232(3wire)
COM5	x	x	RS232(3wire)	RS232(3wire)	RS232(3wire)	RS232(3wire)
COM6	x	x	x	x	RS232(3wire)	RS232(3wire)
COM7	x	x	x	x	RS232(3wire)	RS232(3wire)
COM8	x	x	x	x	RS232(3wire)	RS232(3wire)

*1:RS232 (5wire) / RS485 (2wire).

*2:Use to Program download

Ethernet communication controller

EX9188END Series



- EX9188END Support 1/2/3/4/5/8 RS232/485 devices
- Ethernet port for TCP/IP features TCP, UDP, IP, ICMP, ARP, RARP
- COM1 Can be used to download program and can be RS232 port
- Dual Watchdog support for system recovery
CPU 80188, 40MHZ
SRAM 256KB
FLASH ROM 512KB
EEPROM 2KB
EMBEDDED OS RomDos(Datalight)
Optional: 512KB SRAM, RTC (EX9188END-512)
- Operating Temp: -25~75°C
- Power input: +10 to 30VDC (35/48VDC Available)

Model No.	EX9188E1D	EX9188E2D	EX9188E3D	EX9188E4D	EX9188E5D	EX9188E8D
Ethernet port	10 BASE T	10 BASE T	10 BASE T	10 BASE T	10 BASE T	10 BASE T
COM1	RS232(5wire)	RS232(5wire)	RS232(5wire)	RS232(5wire)	RS232(5wire)	RS232(5wire)
COM2	x	RS485	RS485	RS485	RS485	RS485
COM3	x	x	RS232(3wire)	RS232(3wire)	RS232(3wire)	RS232(3wire)
COM4	x	x	x	RS232(3wire)	RS232(3wire)	RS232(3wire)
COM5	x	x	x	x	RS232(3wire)	RS232(3wire)
COM6	x	x	x	x	x	RS232(3wire)
COM7	x	x	x	x	x	RS232(3wire)
COM8	x	x	x	x	x	RS232(3wire)



Modbus/TCP Embedded controller

EX9188END-MTCP Series



- EX9188END-MTCP Support 1/2/3/4/5/8 RS232/485 devices
- Ethernet port for TCP/IP features TCP, UDP, IP, ICMP, ARP, RARP
- COM1 Can be used to download program and can be RS232 port

Model No.	9188E1D-MTCP	9188E2D-MTCP	9188E3D-MTCP	9188E4D-MTCP	9188E5D-MTCP	9188E8D-MTCP
Ethernet port	10 BASE T	10 BASE T	10 BASE T	10 BASE T	10 BASE T	10 BASE T
COM1	RS232(5wire)	RS232(5wire)	RS232(5wire)	RS232(5wire)	RS232(5wire)	RS232(5wire)
COM2	x	RS485	RS485	RS485	RS485	RS485
COM3	x	x	RS232(3wire)	RS232(3wire)	RS232(3wire)	RS232(3wire)
COM4	x	x	x	RS232(3wire)	RS232(3wire)	RS232(3wire)
COM5	x	x	x	x	RS232(3wire)	RS232(3wire)
COM6	x	x	x	x	x	RS232(3wire)
COM7	x	x	x	x	x	RS232(3wire)
COM8	x	x	x	x	x	RS232(3wire)

Micro PLC w/Ethernet

EX9188EX/ EX9188EXMTCP



- Main board suitable for I/O Expansion board
- Support 1*RS232, 1*RS485
- Ethernet port for TCP/IP features TCP, UDP, IP, ICMP, ARP, RARP
- COM1 Can be used to download program and can be RS232 port
- Dual Watchdog support for system recovery
CPU 80188, 40MHZ
SRAM 512KB
FLASH ROM 512KB
EEPROM 2KB
EMBEDDED OS RomDos(Datalight)
Support RTC

I/O Expansion Board

	RS232	SRAM	Storage Flash	D/I	D/O	D/A	A/D
EX100	x	x	x	*7	x	x	x
EX101	x	x	x	x	*7	x	x
EX310 Series	EX310-1	x	x	x	*3	*2	*2
	EX310-2	x	x	x	*2	*3	*1
	EX310-3	x	x	x	*3	*2	*1
	EX310-4	x	x	x	*2	*3	x
	EX310-5	x	x	x	*3	*2	*2
	EX310-6	x	x	x	X	x	x
EX509 Series	EX509-1	*2	x	x	*5	*2	x
	EX509-2	*2	x	x	*4	*3	x
	EX509-3	*2	x	x	*3	*4	x
	EX509-4	*2	x	x	*2	*5	x
EX603	x	x	16M Bytes	x	x	x	x
EX604	x	x	32M Bytes	x	x	x	x
EX607	x	256K	x	x	x	x	x
EX608	x	512K	x	x	x	x	x



EX9015-MTCP(RTD*7 Channel)



- Support Ethernet 10/100 Based-T communication
- Support protocol Modbus/TCP,TCP/IP,UDP,ICMP, ARP
- Support individual channel type setting for PT100, PT1000, Balco 500&Ni
- Support isolated input channel
- Support 16-bit resolution
- Support Accuracy:±0.05% or better

EX9055-MTCP(DI*8; DO*8)



- Support Ethernet 10/100 Based-T communication
- Support protocol Modbus/TCP,TCP/IP,UDP,ICMP, ARP
- Support 8*DI (Direct/Counter/Freq/Latch)& 8*DO (Direct/Pulse/Delay Width)
- Support Counter(Filter/Signal Width-H/L)/ Frequency(Value Select)/Latch(H/L) inputs
- isolated input/output channel
- 1KHz Pulsed(Freq/Width-H/L/Counts)/ Delay(H-L/L-H Width) output
- Support Dry/Wet contact Digital input type
- Support Source type Digital output
- Isolated voltage 2500Vrms

EX9017-MTCP(AI*8; DO*2)



- Support Ethernet 10/100 Based-T communication
- Support protocol Modbus/TCP,TCP/IP,UDP,ICMP, ARP
- Support individual channel type setting for ±V, ±mV, mA(4~20)/(0~20)
- Support Linear Mapping
- Support Analog Input Alarm Setting & High/Low Alarm Digital Output
- Support isolated input channels
- Support two digital outputs(open collector)
- 16-bit resolution
- 2 Channels digital output
- 0.1% accuracy

EX9050-MTCP(DI*12; DO*6)



- Support Ethernet 10/100 Based-T communication
- Support protocol Modbus/TCP,TCP/IP,UDP,ICMP,ARP
- Support 12*DI (Direct/Counter/Freq/Latch)
- Support Counter(Filter/Signal Width-H/L)/ Frequency(Value Select)/Latch(H/L) inputs
- Support Dry/Wet contact Digital input type
- Support 6*DO digital output(open collector)channels
- 1KHz Pulsed(Freq/Width-H/L/Counts)/Delay(H-L/L-H Width) output
- Support Isolated input and output channels



EX9051-MTCP(DI*12;DO*2;Freq/Count *2)



- Support Ethernet 10/100 Based-T communication
- Support protocol Modbus/TCP,TCP/IP,UDP,ICMP,ARP
- Support 12*DI (Direct/Counter/Freq/Latch)& 2*DO(Direct/Pulse/Delay Width)
- Support 2 channel Counter/ Frequency 4.5KHz Counter(Filter/SignalWidth-H/L)/4.5KHz Frequency(ValueSelect)/Latch(H/L) inputs
- Support isolated input/output channel
- Support 1KHz Pulsed(Freq/Width-H/L/Counts)/ Delay(H-L/L-H Width) output
- Support Dry/Wet contact Digital input type
- Support open collector type Digital output

EX9000-MTCP Ethernet I/O (TCPDAQ) Utility/Software/Command/ Web Server Support: Utility of EX9000-MTCP

TCPDAQ(Ethernet I/O) ActiveX Control
TCPDAQ(Ethernet I/O)DLL API
TCPDAQ(Ethernet I/O)Data Structure
ASCII Command
MODBUS Command
Web Server





How to select the Input type & Output type of Digital Input/ Output Modules:

1. Check the Block Diagram of EX9000 series manual/ Website .
2. Check the wire connection of EX9000 series manual/ Website .
3. What kinds type of Digital Input/ Output of EX9000 series by Table A:

Table A:

	Digital Input	Digital Output
EX9041	*14 (Common Source)	
EX9042		*13 (Open Collector) (NPN)
EX9043		*16 (Open Collector) (NPN)
EX9044	*4 (Common Source)	*8 (Open Collector) (NPN)
EX9050	*7 (Non-Isolation)	*8 (Open Collector) (NPN)
EX9050H	*8 (Non-Isolation) (Source)	*8 (Open Collector) (NPN)
EX9050AH	*8 (Non-Isolation) (Sink)	*8 (Open Collector) (PNP)
EX9051	*16 (Dry & Wet Contact) (Sink/Source)	
EX9052	*6 (Common Ground) *2 (diff)	
EX9053	*16 (Dry Contact)	
EX9055	*8 (Dry & Wet Contact) (Sink/Source)	*8 (Open Source) (N-MOSFET)
EX9060	*4 (Common Source)	*4 (Relay Output)
EX9063	*8 (Common Source)	*3 (Relay Output)
EX9065	*4 (Common Source)	*5 (Relay Output)
EX9067		*7 (Relay Output)
EX9068		*8 (Relay Output)

Note: Our designed was positive logic for Hardware and Spec description.



Serial over Ethernet

Application of GSM/GPRS/ Wireless/ Gate way/ Simple Gateway :

Industry and system integrators :

Interfacing MODBUS/ASCII devices for facility management

Interfacing automation devices for different protocol management

Machine builders and system integrators:

PLC/ Dial-up/ Teleservice remote access

Internet remote access

Remote machine diagnosis

Safety and Standard maintenance



Infrastructure, utilities and system integrators:

Alarm notification system

Remote gateway for SCADA & OPC

Remote metering

Industrial extranets

EX9486-L Linux



- Processor: ARM9-core@180MHz
- Memory: 32MB SDRAM
- Flash: 8MB FLASH
- Network: Ethernet (10/100 M)
- UART: Port 1:RS232/422/485
Port 2,3,4: RS232

EX9486-2L-8 Linux



Hardware

- Processor: ARM9-core@180MHz
- Memory: 32MB SDRAM
- Flash: 8MB FLASH
- Network: Ethernet*2 (10/100 M)
- USB Socket: 2 USB Host (1.1/2.0)

EX9486-4L- 4COM Linux



Hardware

- Processor: ATMEL AT91RM9200@180MHz
- Memory: 64MB SDRAM
- Flash: 16MB FLASH
- Network: Ethernet*4 (10/100 M)
- UART: Port 1:RS232/422/485
Port 2,3,4: RS232

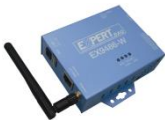
EX9486-L-DIO (Linux/OEM/ODM)



Hardware

- Processor: ATMEL AT91RM9200@180MHz
- Memory: 64MB SDRAM
- Flash: 16MB FLASH
- Network: Ethernet*4 (10/100 M)
- UART: Port 1:RS232/422/485
Port 2,3,4: RS232

EX9486-W/EX9486C-W



- ARM9 WiFi / Ethernet to 1*RS-485/422/232(Metal)

EX9486-L-COM (uc-Linux)



- RS-232/422/485*1TO Ethernet Converter (ARM7)
- CPU : 32-bits ARM-7 Winbonds CPU , 80 MHz , uc-Linux OS
- ROM : 4 M Bytes Flash ROM (2M for User Programming)
- Ethernet : 10 /100 M bps (Auto Detecting)
- Watch Dog Function
- Power : DC 9~30V , 1000 mA
- Environment : Operating Temperature: 0°C ~ 70°C
Storage Temperature : -10°C ~ 80°C

EX9486I-L-COM (uc-Linux)



- RS-232/422/485*1TO Ethernet Converter (ARM7) w/ 3000VDC Isolation
- CPU : 32-bits ARM-7 Winbonds CPU , 80 MHz , uc-Linux OS
- ROM : 4 M Bytes Flash ROM (2M for User Programming)
- Ethernet:10 /100 M bps (Auto Detecting)
- Watch Dog Function
- Power : DC 9~30V , 1000 mA
- Environment : Operating Temperature: 0°C ~ 70°C
Storage Temperature : -10°C ~ 80°C

EX9486-L-COM-DIO(uc-Linux)



- RS-232/422/485*1w/ DI*6, DO*3 TO Ethernet Converter
- CPU : 32-bits ARM-7 Winbonds CPU , 80 MHz , uc-Linux OS
- ROM : 4 M Bytes Flash ROM (2M for User Programming)
- Ethernet 10 /100 M bps (Auto Detecting)
- Digital I/O: DI *6, DO *3
- Watch Dog Function
- Power : DC 9~30V , 1000 mA
- Environment : Operating Temperature: 0°C ~ 70°C
Storage Temperature : -10°C ~ 80°C



ARM Cortex A9 series

EX9686LC-S (OS: Android/Ubuntu)



- Processor: iMX 6S 1Ghz (single core)
- 1G/4GDDR3 GPIO RS485*1 RS232*1 Lan
- Ubuntu/ Android ready
- (Metal case +Power adapter)

EX9686LC-D (OS: Android/Ubuntu)



- High-performance ARM dual-core single board computer
- OS: Android/Ubuntu
- Aluminum case
- Low power consumption
- Multi-core option
- Rich interfaces, supports I2C, GPIO
- 9V~36V wide range power input
- Over voltage protection (optional)
- 9V~36V wide range power input
- Quad-band WCDMA (3G) module (optional)

EX9686LC-D-7R / EX9686LC-Q-7R(OS: Android/Ubuntu)



- High-performance ARM dual-core/quad-core single board computer
- OS: Android/Ubuntu
- Aluminum case
- 7" LCD panel/ **Open frame optional(4"/5"/7"/10")**
- Resistive touch
- Low power consumption
- Multi-core options
- Rich interfaces, supports I2C, GPIO
- 9V~36V wide range power input
- Over voltage protection (optional)
- Quad-band WCDMA (3G) module (optional)

EX9686LC-D-10C / EX9686LC-Q-10C(OS: Android/Ubuntu)



- High-performance ARM dual-core/quad-core single board computer
- OS: Android/Ubuntu
- Aluminum case
- 10.1" LCD panel/**Open frame optional(4"/5"/7"/10")**
- Capacitive touch
- Low power consumption
- Multi-core options
- Rich interfaces, supports I2C, GPIO
- 9V~36V wide range power input
- Over voltage protection (optional)
- Quad-band WCDMA (3G) module (optional)



EX9132 (Simple Gate Way RS232/422/485*1)



- CPU : 8-bits CPU , 36.864 MHz
- RAM : 32 K Bytes ROM : 64 K Bytes
- NETWORK
- PORT : RJ-45 Connector
- SPEED : 10/100M bps(AUTO DETECT)
- PROTOCOL: ARP, IP, ICMP, UDP, TCP, HTTP, DHCP
- MODE : TCP Server/TCP Client ; UDP
- SETUP : HTTP Browser (IE & Netscape) , Com port
- SECURITY: Setup Password and Connect Password
- Built-in 1.5KV Magnetic Isolation
- RS232 / 422 / 485 * 1-Port
- Power : Switching Power CKT , DC 7 ~15V , 500mA
- Dimension: W * L * H : 90 * 90 * 26 mm

EX9132-2 (Simple Gate Way RS232/422/485*1; RS232*1)



- CPU : 32-bits ARM-7 CPU , 25 MHz
- RAM : 2M Bytes SDRAM (1M*16Bits)
- ROM : 128K Bytes FlashROM
- NETWORK
- SERIAL
- Power : Switching Power CKT , DC 7 ~15V , 500mA
- Dimension: W * L * H : 110 * 90 * 30 mm

EX9132C-2 (Simple Gate Way RS232/422/485*1; RS232*1)



- CPU: 32-bits ARM-Cortex M3 CPU , 50 MHz(Max)
- RAM: 64 K Bytes SRAM
- ROM: 256 K Bytes Flash ROM
- Ethernet:
- Port Type RJ-45 Connector
- Speed 10 /100 M bps (Auto Detecting)
- Protocol ARP , IP , ICMP , UDP , TCP , HTTP , DHCP , TELNET
- Mode TCP Server / TCP Client / UDP
- Setup HTTP Browser Setup (IE & Netscape)
- Security Setup Password
- Protection Built-in 1.5KV Magnetic Isolation
- Serial Port * 2 ports:
 - Port RS-232 * 1 Port (DB9) , RS-232/422/485 * 1 Port (Auto Detect)
 - Speed 300 bps~115.2 K bps
 - Parity None , Odd , Even , Mark , Space
 - Data Bit 5 , 6 , 7 , 8
 - Stop Bit 1 , 2
 - Port-1 RS-232 Pins : Rx , Tx , GND , RTS , CTS , DTR , DSR , DCD
 - Port-2 RS-232 Pins : Rx , Tx , GND
 - RS-422 Rx+ , Rx- , Tx+ , Tx- (Surge Protect)
 - RS-485 Data+ , Data- (Surge Protect)Built -in
 - RS-422/RS-485 pull high Resistor15KV ESD for all signals



EX9132C-RS485 (Simple Gate Way RS485*1)



- 32-bit ARM CortEXM3 CPU 50 MHz
- HTTP Browser Setup (IE)
- Speed: 10/100 Mbps (Auto Detect)
- Protocol: ARP, IP, ICMP, UDP, TCP, HTTP, DHCP
- Security: Login Password
- Port : RS-422/485 * 1
- IP Search Utility
- Virtual COM
- DC9~24V, 300mA@12VDC; DC Jack/Terminal Block(optional)

EX9132C-RS232 (Simple Gate Way RS232*1)

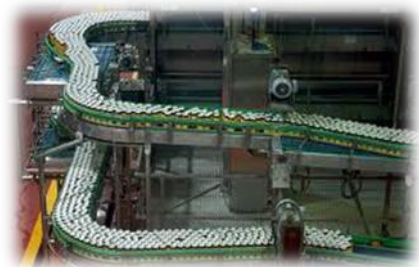


- 32-bit ARM CortEXM3 CPU 50 MHz
- HTTP Browser Setup (IE)
- Speed: 10/100 Mbps (Auto Detect)
- Protocol: ARP, IP, ICMP, UDP, TCP, HTTP, DHCP
- Security: Login Password
- Port : RS-232 * 1
- IP Search Utility
- Virtual COM
- DC9~24V, 300mA@12VDC; DC Jack/Terminal Block(optional)

EX9132C-2-MTCP (Modbus TCP to Modbus RTU)



- 32-bit ARM CortEXM3 CPU 50 MHz
- RAM: 64 K Bytes SRAM
- ROM: 256 K Bytes Flash ROM
- Ethernet: : Port Type RJ-45 Connector
Mode Modbus TCP Server
- Security: Login Password
- Protection Built-in 1.5KV Magnetic Isolation
- Serial Port * 2 ports
- Watch Dog Function
- Power: DC 10 ~30 V , 500mA , Terminal Block
- Led Lamp: SYS (PWR) , Port 1/2 , TX , RX
- Environment: Operating Temperature: 0°C ~70°C
- Storage Temperature : -10°C ~80°C



Zigbee System

Building automation :

- *HVAC Control
- *Lighting Control
- *Access Control
- *Refrigeration Control
- *Hospitality:
 - o Networked Doors, HVAC, Lights, Safes, and Minibars in Room
 - o Wireless Upgrade of Infrastructure without Costly Retrofitting
 - o Normal In-Room Devices become Communication Nodes
 - o Central Remote Monitoring of Doors, Refrigeration Units and Devices in rooms



Home automation:

- *Climate Controls
- *Lighting Controls
- *Doors/Windows Sensors
- *Motion Sensors
- *Media Control

Smart energy:

- *Residential Demand Response
- *Home Area Networks (HAN)
- *Smart Meters
- *In Home Displays
- *Smart Plugs
- *Smart Appliances
- *Other load devices
- *Automatic Meter Reading



Industry automation:

- *Temperature Sensing and Control
- *Pressure Sensing
- *Flow Control
- *Level Sensing

ZigBee wireless networking systems - chips, software and tools - enable Energy Technologies - enertech - help building/home/Industry owners and property managers to better manage energy resources, save cost and preserve the environment. This technology holds enormous promise to positively impact the environment and management of energy consumption, while improving comfort and safety in buildings/homes/industries.

EX9212-Zigbee-Z



- Zigbee to Zigbee
- 16 bits CPU ,12 MHz , 5KB SRAM, 128KB Flash ROM

EX9212-Zigbee-S



- Zigbee to RS232/RS422/RS485*1
- 16 bits CPU ,12 MHz , 5KB SRAM, 128KB Flash ROM

EX9212-Zigbee-E



- Zigbee to Ethernet (10/100)
- 16 bits CPU ,12 MHz , 5KB RAM, 128KB Flash ROM



GSM/GPRS(Serial over GSM/GPRS)

EX9332D-Z GSM/GPRS(TCP/IP Stack)



- TCP/IP protocol ready by AT Command
- Quad-Band: GSM 850/900/1800/1900 MHz (EX9332D-Z)
- Standard DB9 RS232 serial interface
- Standard AT-CMD (EX9332D-Z)
- Data Rate: UL 42.8kbps/DL 85.6kbp (EX9332D-Z)

EX9332C-Z GSM/GPRS(Modem)

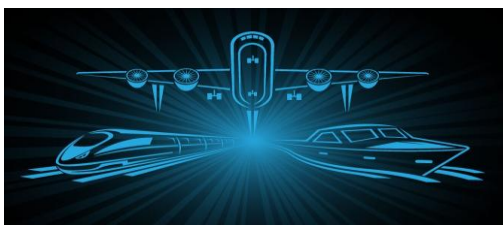


- Quad-Band: GSM 850/900/1800/1900 MHz (Modem)
- Standard DB9 RS232 serial interface
- Standard AT-CMD
- Data Rate: UL 42.8kbps/DL 85.6kbp

EX9632R-H/EX9633R-H



- Tri-Band 3G: WCDMA 850/1900/2100 MHz
- Dual-Band 3G: CDMA2000 800/1900 MHz
- Qual-Band 2G: GSM 850/900/1800/1900 MHz
- 3G Data Rate: max UL 384kbps/DL 384kbps
- 3.5G Data Rate: max DL 7.2Mbps
- Data Rate: UL 3.1Mbps / DL 1.8Mbps
- Protocol
 - CDMA2000 1x
 - CDMA2000 EV-DO Rev 0(EV-DOr0)
 - CDMA2000 EV-DO Rev A(EV-DOrA)
- RJ45 interface
- WEB UI configuration
- DHCP client/server, NAT, VPN support



Industry Ethernet Switch

EX9612HUB



- Industrial 5 Port 10/100Mbps unmanaged Ethernet Switch
- Wide operating temperature range IP175DLFI (-40°C to 85°C)
- Up to 2K MAC addresses
- Broadcast storm protection
- Layer2-4 Multi-Field classifier Support traffic policy
- 9 to 24VDC Power inputs

EX9711



- Industrial 6 Port 10/100Mbps unmanaged Ethernet Switch
- -25 to 70 °C Operating Temperature
- -40 to 80 °C Storage Temperature
- DIN-Rail Kit/Wall-mounting/Desktop installations

EX9911



- 8 Port 10/100Mbps Unmanaged Industrial Ethernet Switch
- Redundant DC Power Input (12-48VDC)
- -25 to 70 °C Operating Temperature
- DIN-Rail Kit

EX9911M



- Industrial 8-Port Managed Redundant Ring Ethernet Switch With 8* 10/100Base-TX port
- Redundant Ethernet Ring : O-Ring (recovery time < 10ms over 250 units of connection)
- MSTP/RSTP/STP (IEEE 802.1s/w/D)
- SNMP V1/V2/V3 support for secured network management
- Rigid IP-30 housing design
- DIN-Rail and panel mounting enabled

PoE System(Injector/Splitter)

In addition to data communications between the two devices, Powerover-Ethernet (PoE) enables an Ethernet Switch/Hub to power a remote device over an existing LAN cable. Without PoE, any remote device needs to be powered independently. Typically, device power is derived from an AC-DC adapter or at board level inside the device.



This adds cost and requires locating the device near a source of AC power. Device installation is further complicated by different safety codes, AC voltages and wall plugs around the world. PoE avoids these problems by supplying low-voltage DC power directly to the Powered Device (PD) from the Power Sourcing Equipment (PSE) that is located in the Ethernet Switcher or mid-span Hub and eliminates the complexity of AC power sources.

To ensure that all equipment is protected and devices operate properly when connected, the IEEE established a universal standard (IEEE802.3af). This specifies the power requirements of the PSE and the PD, and the communication protocol between the two regardless of manufacturer or configuration.

EX9300J-PoE



- Injector (Power Input 90~260V/AC; Power Output 48V 30W)
- Number of Ports : 1 Ethernet Input (data only) Port , 1 Ethernet Output (data +power) Port -
- Power Consumption:35Watts(Max)
- Operating Temperature 0 to 40°C
- Storage Temperature -20 to 85°C

EX9512S-PoE



- Splitter(select Output for 12V/1A 12W or 5V/2A 10W)
- Network Transmission Media: Cat. 3, 4, 5 UTP/STP, 100BASE-TX Cat. 5 UTP/STP
- Power supply: 48V from POE switch
- Operating Temperature 0 to 60°C
- Storage Temperature-20 to 90°C
- Humidity:10 to 90% RH (non-condensing)

Serial over Fiber(Fiber to RS232/485)

EX9540NSC/EX9540NMC/EX9540NMT



- RS232 to Fiber, Single mode, SC connector
- RS232 to Fiber, Multi mode, SC connector
- RS232 to Fiber, Multi mode, ST connector

EX9541NSC/EX9541NMC/EX9541NMT



- RS422/485 to Fiber, Single mode, SC connector
- RS422/485 to Fiber, Multi mode, SC connector
- RS422/485 to Fiber, Multi mode, ST connector

EX9543/EX9543G



- Fiber Optic to Ethernet
- Enhanced 10/100 Base-TX to 100 Base-FX Media converter (EX9543)
- 1000Base-T to 1000Base-X(EX9543G)
- Automatic MDI/MDI-X selection on RJ-45 port

<p><i>Fiber to Ethernet Series:</i></p>	
EX9543-GM	■ PCI Gigabit 1000Base-SX Fiber Card - MM with SC
EX9543-GS	■ PCI Gigabit 1000Base-SX Fiber Card - SM/10Km with SC
EX9543-MM	■ 10/100 base-TX to 100 base-FX,with LFP – MM/2 km,SC/ST
EX9543-SM-30	■ 10/100 base-TX to 100 base-FX,with LFP – SM/30 km,SC
EX9543-SM(13/15)-20	■ Pair 1310/1550; only; Save Cable; 10/100 base-TX to 100 base-FX,with LFP – SM/20 km,SC
EX9543G-MM(550m)	■ 1000 base-T to Gigabit Fiber – MM/550m,SC
EX9543G-SM(10/20)	■ 1000 base-T to Gigabit Fiber – SM/10/20 km,SC
EX9543-SFP-30	■ 125Mbps~155Mbps Single-mode 1310nm, SFP Transceiver 30Km; 0 to 70°C
EX9543I-SFP-30	■ 125Mbps~155Mbps Single-mode 1310nm, SFP Transceiver 30Km; -40 to 85°C
EX9543I-MM(2Km)	■ Ethernet 1port 10/100Base-T(X) to 100Base- FX Fiber; LFP; IP-30; Dual 12 ~ 48VDC power; -40 to 70°C

EX9543I-SM-30(mini)	<ul style="list-style-type: none"> Ethernet 1port 10/100Base-T(X) to 100Base-FX Fiber 30Km; LFP; IP-30; Dual 12 ~ 48VDC power; -40 to 70°C
EX9543I-SM-30	<ul style="list-style-type: none"> Ethernet 1port 10/100Base-T(X) to 100Base-FX Fiber 30Km; LFP; IP-30; Dual 12 ~ 48VDC power; -40 to 70°C
EX9543I-sfp port	<ul style="list-style-type: none"> Ethernet 1port 10/100Base-T(X) to 100Base-FX SFP port; LFP; IP-30; Dual 12 ~ 48VDC power; -40 to 70°C
EX9543-sfp-244G	<ul style="list-style-type: none"> Managed 24* 100Mbps SFP w/4 Gigabit Combo (10/100/1000Mbps RJ-45 & 1000Mbps SFP slot) Dual AC/DC
EX9973FM-30	<ul style="list-style-type: none"> Managed 6* 10/100Base-TX + 2*100Base-FX port IP-30 Dual 12~48VDC -40°C to +75°C
EX9973FD-30	<ul style="list-style-type: none"> Unmanaged 6* 10/100Base-TX + 2*100Base-FX port IP-30 Dual 12~48VDC -40°C to +75°C
EX9543G-MM (550m)	<ul style="list-style-type: none"> 1 port 10/100/1000Base-T(X) to 1000Base-FX multi-mode; IP-30; Dual 12 ~ 48VDC power; -40 to 70°C
EX9543G-SM (10/20Km)	<ul style="list-style-type: none"> 1 port 10/100/1000Base-T(X) to 1000Base-FX single-mode; IP-30; Dual 12 ~ 48VDC power; -40 to 70°C
EX9543G-sfp port	<ul style="list-style-type: none"> 1 port 10/100/1000Base-T(X) to 1000Base-LX SFP port; IP-30; Dual 12 ~ 48VDC power; -40 to 70°C
EX9543G-SFP-10 (0/-40°C)	<ul style="list-style-type: none"> 1.25Gbps Single-mode 1310nm; 1000Base-LX SFP Transceiver 10Km; 0~70°C/ -40 to 85°C
EX9543G-SFP-500m (0/-40°C)	<ul style="list-style-type: none"> 1.25Gbps Single-mode 1310nm; 1000Base-LX SFP Transceiver 10Km; 0~70°C/ -40 to 85°C 85°C





Industrial Monitor

EX91107(P)/EX91108(P)



- 7"~8" TFT LCD Resistive touch window, optional projected capacitive touch
- Aluminum die casting enclosure
- Front bezel IP65 rating
- Rear side OSD
- Wide Range Power Input DC 9~36V

EX91112(P)/EX91115(P)



- 12"~15" TFT LCD Resistive touch window, optional projected capacitive touch
- Aluminum die casting enclosure
- Front bezel IP65 rating
- Rear side OSD
- Wide Range Power Input DC 9~36V

EX91154/EX91174/EX91194/EX91224



- 15"~**21.5" XGA** 1024 x 768/SXGA 1280 x 1024/**Full HD 1920 x 1080** Industrial Display, VGA input/OSD on front side, AC100~240V power input, Optional touch, steel enclosure

EX91156/EX91176/EX91196



- 15"~17" XGA 1024 x 768/SXGA 1280 x 1024 **5 sides IP65 Display**, VGA input, OSD on the back side, Optional touch, with adaptor, stainless steel enclosure

EX91153/EX91193



- 15"~19" XGA 1024 x 768/SXGA 1280 x 1024 **total IP65 Display**, VGA input, OSD on the back side, Optional touch, with adaptor, stainless steel enclosure

EX91155A/EX91195A



- 15"~19" XGA 1024 x 768/SXGA 1280 x 1024 **high brightness** 1000 nits Display, VGA input, OSD on the back/front side, AC100~240V power input, Optional touch, steel enclosure



Industrial Display – Open frame

EX91189/91109/91129/91159/91179/91199



- 8"~19" SVGA 800 x 600 open frame, VGA input, without touch, 12 VDC power input with adaptor
Operating temperature: 0°~50°C

Panel PC with Atom D2550 1.8G fanless panel PC

EX93284AT-D/93584AT-D/93784AT-D/93984AT-D



- 15"~19" TFT-LCD Resistive touch or GFG touch option
- Intel Atom D2550 1.8GHz CPU support
- Fanless Design
- IP65 except I/O side
- Wide range DC 11~32V

Slim type Fanless Panel PC with Atom D2550 1.8G

EX93514A/EX93714A/EX93914A



- 15"~19" XGA 1024 x 768/SXGA 1280 x 1024 Intel Atom D2550 fanless **slim type** panel PC, 2GB DDR3 memory, 320GB 2.5" SATA 2 HDD, resistive touch, 11~32VDC input with adaptor, black steel enclosure
Operating temperature: 0°~50°C(with HDD), -20°~60°C(with Industrial SSD or CF)

HMI (Atom N270 1.6G CPU)Series

EX96057A/96087A/96107A/96127A/96157A/96177A/96197A



- 5.7"~19"VGA 640 x 480/SVGA 800 x 600/XGA 1024 x 768/SXGA 1280 x 1024/ fanless Panel PC with Atom N270 1.6G CPU, 1GB DRAM, and resistive touch Screen(support SATA HDD)

HMI (Atom D525 1.8GHz CPU)Series

EX96086A/96126A/96156A/96176A



- 8"~17" SVGA 800 x 600/XGA 1024 x 768/SXGA 1280 x 1024/ fanless Panel PC with Atom D525 1.8G CPU, DDR3, and overlay resistive/resistive touch Screen(support SATA HDD)



HMI (Atom Z510 1.1G/Z530 1.6G CPU)Series

EX96053A/96083A/96103A/96123A



- 5.7"~12" VGA 640 x 480/SVGA 800 x 600 fanless Panel PC with Atom Z510 1.1G CPU, 1GB DRAM on board, and resistive touch screen

HMI (Atom N2600 1.6G CPU)Series

EX91807A/91808A/91810A /EX91812A/91815A



- 7"~15" WVGA/SVGA/WXGA/XGA fanless HMI barebone with Atom N2600 1.6G CPU, 2GB DDR3 RAM, Resistive/Projective touch screen, 9~36VDC input with adapter, Aluminum chassis.

HMI (Atom D2550 1.86G CPU)Series

EX91816A/91817A/91818A/91821A



- 15.6"(HD),18.5"(HD),17" SXGA~21.5"(FHD)fanless HMI barebone with Atom D2550 1.86G CPU, 4GB DDR3 RAM, Resistive/Projective touch screen, 9~36VDC input with adapter, Aluminum chassis.

HMI (Bay Trail N2930/E3845) 2.16G CPU Series

EX91907B/91908B/91910B/91912B/91915B



- 7"~15" WVGA/SVGA/WXGA/XGA)fanless HMI barebone with Bay Trail N2930/E3845 2.16G CPU, 2GB DDR3L RAM, Resistive/Projective touch screen, 9~36VDC input with adapter, Aluminum chassis.

EX91916B/91917B/91918B/91921B



- 15.6"(HD),17"(SXGA)18.5"(HD)~21.5"(FHD) fanless HMI barebone with Bay Trail N2930/E3845 2.16G CPU, 2GB DDR3L RAM, Resistive/Projective touch screen, 9~36VDC input with adapter, Aluminum chassis.

HMI (Core i3-4010U 1.83G CPU)Series

EX91015i/91016i/91017i/91018i/91821i



- 15"(XGA),15.6"(HD),17"(SXGA),18.5"(HD)~21.5"(FHD) fanless HMI barebone with Intel 4th Gen. Core i3-4010U CUP, 2GB DDR3L RAM, Resistive/Projective touch screen, 9~36VDC input with adapter, Aluminum chassis.



Core 2 Duo Panel PC, fanless

EX93517BT/93717BT/93917BT/93228AT(FHD)



- 15"~21.5" XGA Intel P8400 and Intel GM45 chipset, fan less design panel PC , 2GB DDR2 memory, 320GB 2.5" SATA2 HDD, resistive touch, 1 X PCI slot, 9~32VDC power input with adaptor, black Steel enclosure

Panel PC with Atom D525 slim Panel PC

EX93282/93283/93582/93583/93782/93783/93982/93983



- 12"~19" SVGA 800 x 600 / XGA 1024 x 768/SXGA 1280 x 1024 slim Panel PC with Atom D525 CPU, DDR3, IP65 Front panel/6 sides IP42 with waterproof kit, Stainless housing(93X82), Steel housing(93X83), Resistive/Capacity(optional)

Panel PC with Atom N2600 1.6G fanless panel PC

EX93284AT-N



- 12.1" SVGA 800 x 600 **5 sides IP65** Intel Atom N2600 1.6G fanless Panel PC DDR3 2G on board, resistive touch, 11~32VDC power input with adaptor, stainless steel enclosure

Panel PC with Atom Z510 1.1G, w/out heat sink at rear side

EX93298



- 12.1" SVGA 800 x 600 slim Waterproof Panel PC with stainless steel enclosure, with Atom Z510 1.1G CPU, 1GB DRAM, 2.5" 60GB IDE HDD (24 x7), **IP65 waterproof I/O** connectors, no PCI slot inside, and with touch

In-wall mount Panel PC

EX936608D-AL/936610D-AL/936612D-AL/936615D-AL EX936617D-AL/936619D-AL



- Atom D2550 1.86GHZ CPU
- 2GB DDRIII
- Win embedded 7(standard)
- 8GB CF card
- Resistive touch screen
- 8"~19" SVGA/XGA/SXGA IP65 Front
- Fanless Panel PC



ExpertDAQ system(SCADA with DIO/AIO)

EX92550/95550/97550/99550-DAQ (w/DIO or AIO)



- 12.1"~19" LCD Touch with Intel® Atom™ D2550 processor
- 12V only single voltage design for AT/ATX System Power
- On-board DDR3 1066 MHz 2/4GB SDRAM
- Support VGA and 24-bit LVDS with dual-display
- Complete I/O with 4*USB, SATA 3Gb/s, 4*COM and DVI
- Dual GbE & Mini PCIe(Half/ Full)
- Resistive/Capacitive(optional) touch; Metal/Aluminum(optional)
- DI/DO/AI/AO(Optional); Terminal Block ready; External Power Supply(10~30V DC)
- Utility of EX9000& DEMO kit& DLL ready
- ExpertView of SCADA (DEMO kit included w/ EX9000 driver ready)
- **IO with Dual Watch Dog & Power on Value & Save Value**

Fanless BOX PC

EX92663C



- Fanless Box PC, Intel Atom D2550 1.86G processor with Intel NM10 Express, 2GB DDR3, 320GB 2.5" SATA HDD, no PCI slot, 9~36V DC input with adaptor, Operating temperature: -20°~50°C
Dimension: 268 x 195 x 74.6mm

EX92664C



- Fanless Box PC, Intel Atom D2550 1.86G processor with Intel NM10 Express, 2GB DDR3, 320GB 2.5" SATA HDD, 1 x PCI slot, 9~36V DC input with adaptor
Operating temperature: -20°~50°C
Dimension: 268 x 195 x 101.8mm

EX92665C



- Fanless Box PC, Intel Atom D2550 1.86G processor with Intel NM10 Express, 2GB DDR3, 320GB 2.5" SATA HDD, 2 x PCI slot, 9~36V DC input with adaptor, operating temperature: -20°~50°C
Dimension: 268 x 195 x 122.7mm

EX92663A



- Fanless Box PC, Intel Atom D525 1.8G processor with Intel ICH87M Chipset 2GB DDR3 800MHz memory, 320GB 2.5" SATA 2 HDD with tray, no PCI slot, 11~32 V DC with adaptor
Operating temperature: 0°~50°C
Dimension: 229.5 x 203.2 x 73.7 mm



EX92701A



- IP67 waterproof fanless Box PC, Intel Atom Z510 processor on board 1GB memory, 8GB SLC SSD, 11~32VDC input with adaptor
Operating temperature: -20°~60°C
Dimension: 223 x 147 x 62mm

EX92110



- Fanless Box PC, Intel Atom N270 1.6G processor with Intel 945GSE+ICH7M Chipset, 1GB DDR2 Memory, 320GB 2.5" SATA HDD, 11~32V DC input with adaptor, Operating temperature: 0°~50°C
Dimension: 232.5 x 198 x 48.5mm

EX98611



- Fanless, Intel® Socket G Core™ i5/i7 series processors, 1 x PCIe x8, (support SATA HDD)

EX98621



- Fanless, Intel® Socket G Core™ i5/i7 series processors, 1 x PCIe x16, (support SATA HDD) DVI-I + DVI-D, WiFi, Raid 0/1

EX98623



- Fanless, Intel® Socket G Core™ i5/i7 series processors, 2 x PCIe x2, (support SATA HDD) DVI-I + DVI-D, WiFi, Raid 0/1

EX92611



- Fanless, AMD G-Series APU G-T40N dual-core 1.0 GHz, 6 x USB, 8 x COM, 2 x GbE LAN, DVI/I, DIO, 3 x Mini-card. Triple-mPCIe for 3G, Wi-Fi, GPS

EX9301



- Intel 4-core Bay Trail N2930 / J1910 CPU
- SO-DIMM Support DDR3 800, up to 8GB
- DVI-I: Integrated 7th Intel Graphics support
- DX11, OGL3.2, max. 1920x1200 resolution
- 24-bit LVDS: max. 1920x1200
- SATA2: SATA2 x 1, mSATA x 1
- Audio
- Gigabit LAN x 2
- mini-PCI socket x 2
- COM x 4 (RS-232/422/485x1 + RS-232x3)
- USB3.0 x 1, USB2.0 x 6
- GPIO x 8
- +9V ~ +24V DC-IN

Industrial Board

EX9302



- Intel 4-core Bay Trail E3845CPU
- 4GB DDR3L RAM solder on board
- Optional VGA: Integrated 7th Intel Graphics DX11, OGL3.2, max. 1920x1200 resolution
- 24-bit LVDS: max. 1920x1200
- HDMI 1.4a: max. 1920x1200
- SATA2: SATA2 x 1, mSATA x 1
- Audio
- Gigabit LAN x 1
- mini-PCI socket x 2
- COM x 2
- USB3.0 x 1, USB2.0 x 5
- +12V DC-IN

EX92550-BOX



- Ultra slim type Fanless Box PC, Intel Atom D2550 1.86G processor with Intel NM10 Express Chipset 2GB DDR3 800MHz memory, 1.8" SATA2 HDD, 2/4 x USB, 1 x RS232/422/485, 1 x Internal Mini-PCIe slot half size, Power input 9~36V DC, Operating temperature: -20°~60°C Dimension: 246.2 x 139.8 x 29.2 mm

Embedded Board

EX9509LT



- 486DX-1G MHz CPU
128MB DDR2, CRT/ LCD, USB2.0x4
GPIO, LANx1, PC/104, IDE, Parallel,
CF-2 socket, COMx4, KB/MS, WDT,
Single+5V, LVDS interface, Touch Controller
- Dimension: 146mm x 101mm 3.5"
- Operating Temperature: 0°C ~ +60°C

EX9500



- 486DX-1GHz CPU, 256MB DDR2, CRT / TFT,
USB2.0x4, GPIO, LANx1, PC/104, IDE, Parallel,
FDD, CF-2, COMx4, KB/MS, WDT, Single+5V;
Optional RS-232/422/485 x 8, Touch Controller, 8MB
SPI Flash, LAN x 3, LVDS
- Dimension: 146mm x 101mm 3.5"
- Operating Temperature: -10°C ~ +70°C

EX9505



- 486DX-1GHz CPU
256MB DDR2, CRT/LCD, USB2.0,
16-bit GPIO, LANx1, PC/104 socket,
IDE, Parallel, CF-2 socket, COM x 4,
WDT, Single +5V; Optional 4MB SPI Flash
- Dimension: 185mm x 122mm ISA half card
- Operating Temperature: 0°C ~ +60°C

EX9781



- LGA1155 Intel® Core™ i7/i5/i3/Pentium®/Celeron® processor supported
- Up to 32GB 1333MHz dual channel DDR3 SDRAM
- Intel® PCIe GbE with Intel® AMT 7.0 supported
- USB 3.0 and SATA 6GB/s supported
- Dimension: 244mm x 244mm
- Operating Temperature: -10°C ~ +60°C

EX9670



- Dual-core x86DX3 CPU
1GB soldered RAM
LVDS/TFT LCD, CRT, LANx1
PC/104 socket
mini-PCIe socket x 3 w/ SIM socketx1
Audio, USB2.0, SATA, mSATA, microSD,
16-bit DIO, RS-232 x 3 + RS-232/422/485 x 1,
LPT, WDT, ADC, Motion Control, KB, Mouse,
SPI, I2C, 8V ~28V DC-IN; Optional: Touch,
56-bit DIO, SPI Flash, +5V Power DC-IN
- Dimension: 146mm x 102mm 3.5"
- Operating Temperature: 0°C ~ +60°C
-40°C ~ +85°C (optional)

EX9508



- 486DX-1G MHz CPU
128MB DDR2, 16-bit GPIO
LAN, COM x 4 (RS-232 x 4)
WDT, USB2.0 x 4, PC/104, CF-2
Single +5V DC-IN, IDE, Parallel
Optional RS-232/422/485
SPI Flash, LCD/CRT
- Dimension: 96mm x 91mm PC/104
- Operating Temperature: -40°C ~ +85°C (no LCD/CRT)
-20°C ~ +85°C

EX9678



- Dual-core x86DX3 CPU
1GB soldered RAM, TFT/LVDS LCD,
CRT, LAN x 1, PC/104 Socket,
HD Audio, SPI Flash, USB2.0x4, CFast socket,
24-bit GPIO, RS-232x4 (RS-232 x2 + RS-485x2),
LPTx1, WDT, ADC, PS2 KB/Mouse, Single +5V
- Dimension: 92mm x 96mm PC/104
- Operating Temperature: 0°C ~ +60°C
Optional -40°C ~ +85°C

EX9675



- CPU: Intel ATOM N270 1.6G CPU
Dual-core x86DX3 CPU, 1GB soldered RAM, TFT LCD, CRT, LAN x 1, PC/104 socket, ISA, mini-PCIe x 2, Audio, SPI Flash, USB2.0 x 4, CFast/SATA, RS-232x3 + RS-232/422/485x1, LPT, WDT, KB / Mouse, Single +5V; Optional: LVDS, 4/5/6-wire resistive Touch, 8~28V DCIN, support 3G/WCDMA/HSDPA with SIM socket, COM x 7 (RS-232 x 1 + RS-232/422/485 x 6)
- Dimension: 185mm x 122mm ISA half Card
- Operating Temperature: 0°C ~ +60°C
Optional -40°C ~ +85°C

EX9990



- Intel Bay Trail N2930 / N2807 / E3845 CPU
- SO-DIMM Support DDR3 1333, up to 8GB
- DVI-I: Integrated 7th Intel Graphics support
- DX11, OGL3.2, max. 1920x1200 resolution
- 24-bit LVDS: max. 1920x1200
- SATA2: SATA2 x 1, mSATA x 1
- Audio
- Gigabit LAN x 2
- mini-PCI socket x 2
- COM x 4 (RS-232/422/485x1 + RS-232x3)
- USB3.0 x 1, USB2.0 x 6
- GPIO x 8
- +9V ~ +24V DC-IN
- Dimension: 146mm x 102mm 3.5"
- Operating Temperature: 0°C ~ +60°C

EX91996



- -Intel 4-core Bay Trail N2930 / E3845CPU
- -2GB DDR3L RAM solder on board
- -Optional VGA: Integrated 7th Intel Graphics
DX11, OGL3.2, max. 1920x1200 resolution
- -24-bit LVDS: max. 1920x1200
- -HDMI 1.4a: max. 1920x1200
- -SATA2: SATA2 x 1, mSATA x 1
- -Audio
- -Gigabit LAN x 1
- -mini-PCI socket x 2
- -COM x 2
- -USB3.0 x 1, USB2.0 x 5
- -+12V DC-IN
- Dimension: 100mm x 72mm Pico-ITX
- Operating Temperature: 0°C ~ +60°C

PCI Card Series

EX94022/94024/94028 DIS/TIS



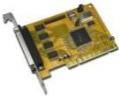
- Two 16C950 UART Serial Ports over PCI Slot
- PCI 32-bit, PIO Mode with 133MB/S Bandwidth
- Supports RS-485 Auto Transceiver Turn Around by Unique
- EX94022: RS485/422 x 2
- EX94024: RS485/422 x 4
- EX94028: RS485/422 x 8

EX94220



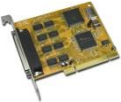
- 2S PCI Card
- PCI 32-bit, PIO Mode with 133MB/S Bandwidth
- PCI IRQ Sharing Feature Eliminates IRQ Conflicts

EX94241



- Fully PCI Bus 2.2 and PCI Power Management 1.0 Compliant, works in 5V or 3.3V Slots
- Fully 16C950 High performance UART channels
- IEEE1284 EPP parallel port

EX94280



- 8 x 16C950 UART Serial Ports
- PCI 32-bit, PIO Mode with 133MB/S Bandwidth
- PCI IRQ Sharing Feature Eliminates IRQ Conflicts

EX9543/G (PCI Card)



- High bandwidth 1000Mbps Network Speed
- Supports Full-Duplex Mode
- Supports IEEE 802.3x Full-Duplex Flow Control

PCIe Card Series

EX94022/94024/94028 DIS-e/TIS-e



- Expands 2 com ports on system
- High Speed Baud Rate up to 921.6Kbps
- Supports PCI Express x1, x2, x4, x8, and x16 Lane
- 2.5KV Optical & Voltage Isolation
- DB25 pin to 2 x DB9M Cable / Terminal Block option (EX94022TIS-e)
- Supports Micro Windows, Linux, and QNX drivers

EX94024DIS-e/TIS-e



- Expands 4 com ports on system
- High Speed Baud Rate up to 921.6Kbps
- Supports PCI Express x1, x2, x4, x8, and x16 Lane
- 2.5KV Optical & Voltage Isolation
- DB44F pin to 4 x DB9M Cable / Terminal Block option (EX94024TIS-e)
- Supports Microsoft Windows, Linux, and QNX drivers

EX94028DIS-e/TIS-e



- Expands 8 com ports on system
- High Speed Baud Rate up to 921.6Kbps
- Supports PCI Express x1, x2, x4, x8, and x16 Lane
- VHDCI 68 pin to 8 x DB9M Cable/ Terminal Block option(EX94028T-e)
- Supports Microsoft Windows, Linux, and QNX drivers

PCI Analog I/O Card Series

EX94421(Supports Microsoft Windows, Linux)



General:

- PCI data width — 32 Bits
- PCI Card ID — 4 bits
- Dimension — 156(W)*112(H)mm , 6.2(W) * 4.5(H)in

Analog block:

- input channels — 8 channel single end or differential (standard:8 channels)
- resolution — 12bit
- input range — -10V~ +10V, -5V~ +5V , 0~10V, 0~5V
- range selection — software selectable
- conversion speed — 6us per channel
- accuracy — full range within 9mV

EX-962137 37P Din rail mounted dummy wiring board (Option)

- Connection cable — D-type EX-962137 37P cable to connect main and wiring board
- Dimension — 90(W)*113(L)*60(H)mm , 3.6(W)*4.5(L)*2.4(H)in

PCI Digital+Analog I/O Card Series

EX94421A(Supports Microsoft Windows, Linux)



General:

- PCI data width — 32 Bits
- PCI Card ID — 4 bits
- Interrupt — software disable/enable
- Dimension — 156(W)*112(H)mm , 6.2(W) * 4.5(H)in

Analog block:

- input channels — 8 channel single end or differential (standard:8 channels)
- resolution — 12bit
- input range — -10V~ +10V, -5V~ +5V , 0~10V, 0~5V
- range selection — software selectable
- conversion speed — 6us per channel
- accuracy — full range within 9mV

Digital I/O block:

- i/o channels — 16 TTL (port0,port1)
- configuration — byte input /output

Timer/Counter block:

- channels — 2
- data length — 32 bit
- specific input — trigger in/ counter in via digital I/O port0
- specific output — trigger out / counter out via digital I/O port 1
- time base — PCI system clock (33/66MH)
- functions —
 - programmable one-shot
 - square wave generator
 - event counter
 - PWM generator

EX-962137 37P Din rail mounted dummy wiring board

- Connection cable — D-type EX-962137 37P cable to connect main and wiring board
- Dimension — 90(W)*113(L)*60(H)mm , 3.6(W)*4.5(L)*2.4(H)in

PCI Digital I/O Card Series

EX94317(Supports Microsoft Windows, Linux)



Input

- Input : 48(max) TTL level
- Interrupt at IN00 ~IN07

Output

- Output level: 48(max) TTL level
- Output source : 35mA(peak) per channel
- Output Sink : 35mA(peak) per channel

Main Card General

- PCI Card ID : 4 bits
- Connector : 60-pin male flat-cable connector
- Operation temperature : 0 to +70 degree C
- Storage temperature : -20 to +80 degree C
- Operation humidity : 5~95% RH, non-condensing
- Dimensions : 130(W) * 102(H) mm , 5.2(W) * 4.1(H)in

Industrial DAQ card (PCI/PCI-e)

EX94317V2(Supports Microsoft Windows, Linux)



Input

- Input : 48(max) TTL level
- Interrupt at IN00 ~IN07

Output

- Output level: 48(max) TTL level
- Output source : 35mA(peak) per channel
- Output Sink : 35mA(peak) per channel

Main Card General

- PCI Card ID : 4 bits
- Connector : 60-pin male flat-cable connector
- Operation temperature : 0 to +70 degree C
- Storage temperature : -20 to +80 degree C
- Operation humidity : 5~95% RH, non-condensing
- Dimensions : 130(W) * 102(H) mm , 5.2(W) * 4.1(H)in

Others

EX94009



- Provides 4 Serial Ports over USB Port

EX98009



- Provides 8 Serial Ports over USB Port

EXBackplane



- Up to 12 pci slots

EXChassis



- 1U up to 4 U chassis

EXKVM



- 16/24/36 port IP-KVM

EXSPS



- Din-Rail power supply

Factory Facility

---DIP Equipment



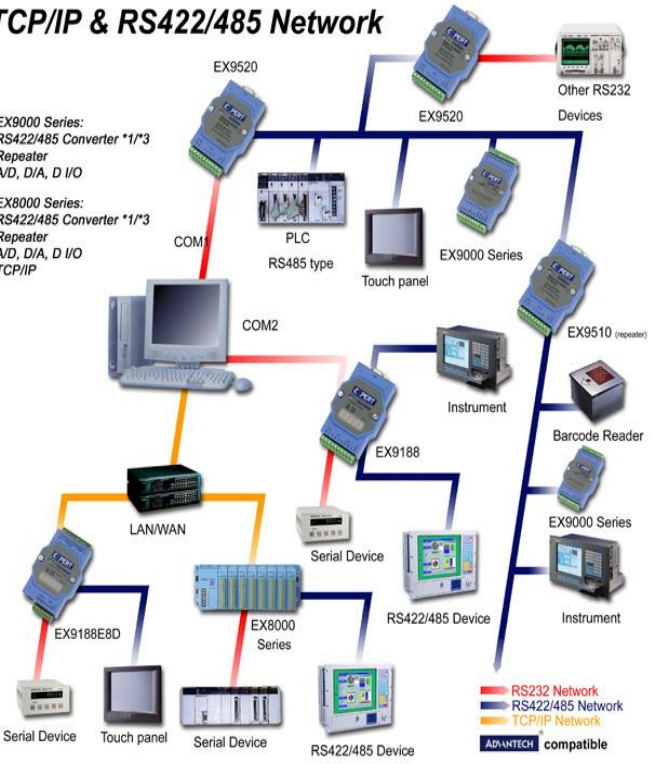
---SMT Equipment



TCP/IP & RS422/485 Network

EX9000 Series:
RS422/485 Converter *1/*3
Repeater
A/D, D/A, D I/O

EX8000 Series:
RS422/485 Converter *1/*3
Repeater
A/D, D/A, D I/O
TCP/IP



OEM/ODM Facility

For OEM/ODM Business requirement that we would like to release our manufacture facility and ISO 14001 Management System Certificate to our distributors for ref



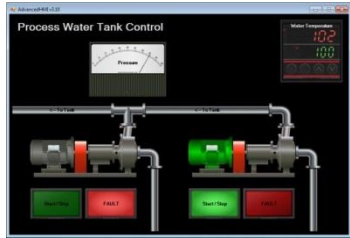
OEM Process:



ODM Process:

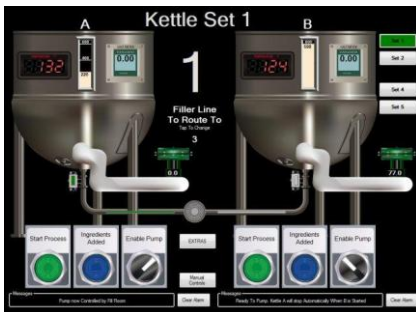


(Energy Management/SCADA Software/BOD COD Online/
CEMs Online)



TYPE OF APPLICATION

- *MULTI LOCATION MONITORING
- *REMOTE STATION MONITORING
- *CENTRALIZED CONTROL
- *CENTRALIZED MONITORING
- *ENERGY MANAGEMENT
- *BILLING APPLICATION
- *ENTERPRISE DATA MANAGEMENT
- *BOD/COD ONLINE
- *AUTOMATION/BATCH CONTROL



Technology at work for you

CONNECTING YOUR PROCESS TO OUR TECHNOLOGY

We are software solution provider which standing side by side many success story of hardware importer here and world wide. Our software are scalable and easy configuration setting to meet all size and many type of applications.

ENERGY MANAGEMENT

Provide build in function for easy settings and gain benefit from demand control. Automation compute daily electricity expense and comparison before and after flexible I/O with ready to use devices communication drivers: Digital Power meter, PLCs, I/O & Ethernet I/O Modules Industrial Standards and Open system architecture Modbus RTU, Modbus ASCII, Modbus TCP, OPC and much more.

flexible solutions for your process needs

SYSTEM CONSULTING PROVIDES A TOTAL END TO END SOLUTION

SCADA SOFTWARE BASED SOLUTIONS

Our state of the art SCADA core run and serve real time for accurate report and logging. An enterprise version handles up to 256 communication channels and unlimited concurrent network communication channels.

- *MMI Mimic Screen with Vivid color and animation
- *Grid ReportS and Excel Exporting
- *Trend Chart and chart analyzing tools
- *Historical, Events Logging
- *User programmable set point from any incoming & computing parameters

CEMS AND AQMS

Provide online data to DIW, PCD or IEAT in Application and comply Application's emission regulations. Comply US EPA for CEMS (EPA 40 CFR 60-Appendix F)

Build in driver for Environnement S.A and SAM32 data logger.

User can easy produce daily, weekly, monthly or periodic data listing and graphical reports.

DATA MANAGEMENT

Automation recording data and clean up for hard disk space saving. ODBC database support and scalable database options provide robust and consistency system.

Monitoring:
Local, Remote, Center

Automation Control:
Batch, Centralized Control
Demand Control

Energy Conservation:
Energy, Billing Report

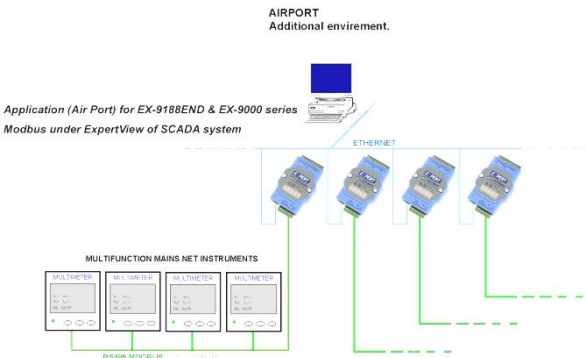
- *Microsoft Windows 32 and 64 bit for Server
- *Client Server
- *Local and wide are networking support
- *Single MMI screen, create once then display on PC and smart gadget with our dynamic displays technology

CONSULTING/ SALES/ SUPPORT

A powerful flexible and sophisticate SCADA software for various kind of industries.

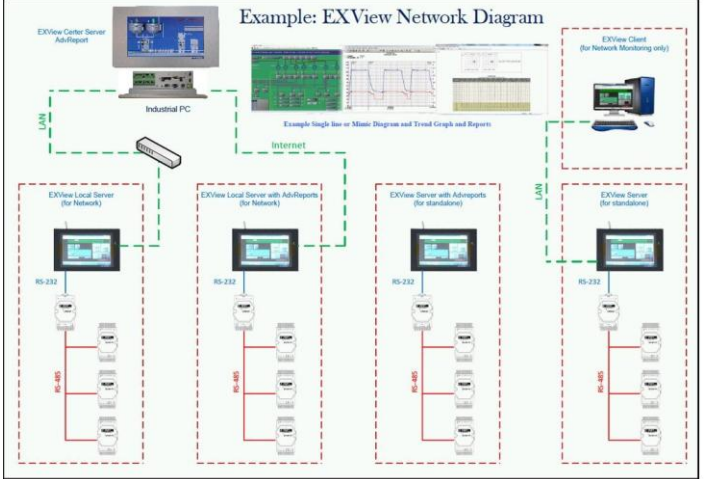
We are behind many success stories of Instruments importer and automation control system in Application.

We provide total solution for software system from single and stand alone PC up to large network with Enterprise Software System under a sophisticated web based.



Application 1.:

Expert Remote I/O Module+ExpertView+Expert Panel PC =ExpertDAQ



This is a typical Construction of Control Enclosure Panel with the Expert Panel PC and Expert Remote I/O module and Power Switch and UPS and Wire connection into one of Cabinet :



Fig. 1-1: Separated the Expert Remote I/O module and Industry Expert Panel PC



Fig. 1-2: Enclosure panel with the Expert Remote I/O module and Industry Expert Panel PC and Power Switch and UPS and Wire connection



Fig. 1-3: The application for Light Color/Bright Control



Fig. 1-4: The application for Light Color/ Bright

Conclusion:

The ExpertDAQ system are combined the Expert Remote I/O module and Expert Panel PC which can save the Assemble cost and Material cost and Software installation cost and Space of Control Enclosure Panel

Application 2. :

Expert Embedded Board & Touch Screen & Expert Remote I/O module with Power Supply & Wire Connection into Control Enclosure Panel



Fig. 2-1: Expert Remote I/O module and Expert Embedded Board and Power Supply and Wire Connection into Enclosure of Control Panel (Note: Embedded Board on back side of Wall Mount)

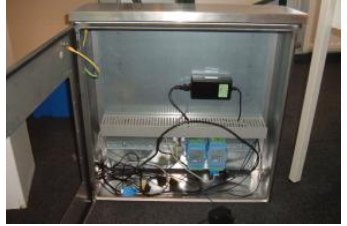


Fig. 2-2 : Expert Remote I/O module and Expert Embedded Board and Power Supply and Wire Connection into Enclosure of Control with Touch Screen(Note: Touch Screen on Door of enclosure)



Fig. 2-3 : Wire connection for Expert Remote I/O module in Enclosure of Control Panel



Fig. 2-4 : Enclosure of Control Touch Panel



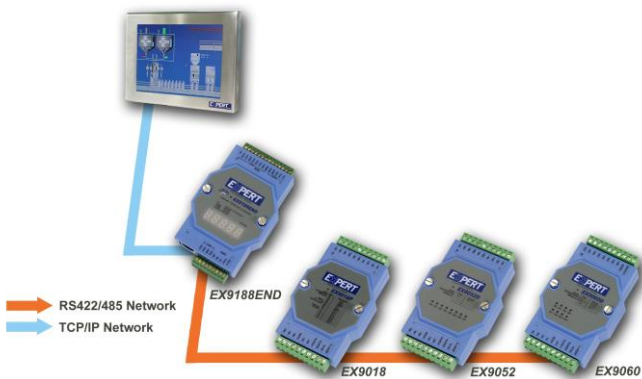
Fig. 2-5 : Enclosure of Control Touch Panel (Note: Contents of Enclosure are Expert Remote I/O module and Expert Embedded Board and Power Supply and Touch Screen)

Conclusion:

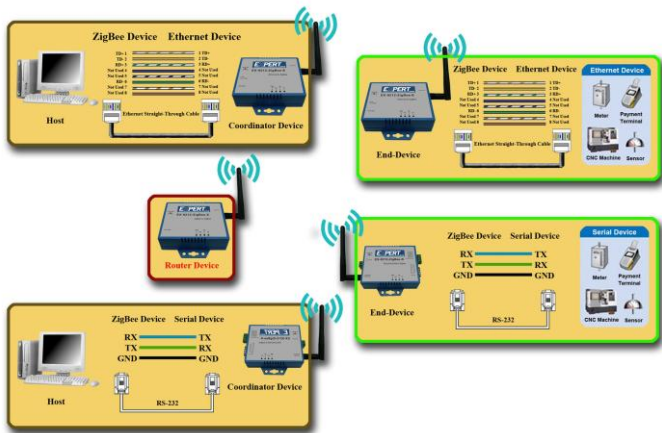
The ExpertDAQ system are combined the Expert Remote I/O module and Expert Panel PC which can save the Assemble cost and Material cost and Software installation cost and Space of Control Enclosure Panel



EX9188END application



ZigBee application



Ethernet IO series

EX-9015-MTCP

- Support Ethernet 10/100 Based-T communication
- Support protocol Modbus/TCP, TCP/IP, UDP, ICMP, ARP
- Support individual channel type setting for PT100, PT1000, Balco 500&NI
- Support isolated input channel
- Support 16-bit resolution
- Support Accuracy: $\pm 0.05\%$ or better

EX-9055-MTCP

- Support Ethernet 10/100 Based-T communication
- Support protocol Modbus/TCP, TCP/IP, UDP, ICMP, ARP
- Support 8*DI (Direct/Counter/Freq/Latch) & 8*DO (Direct/Pulse/Delay Width)
- Support Counter(Filter/Signal Width-H/L)/Frequency(Value Select/Latch(H/L) inputs
- isolated input/output channel
- 1KHz Pulsed(Freq/Width-H/L/Counts)/Delay(H-L/L-H Width) output
- Support Dry/Wet contact Digital input type
- Support Source type Digital output
- Isolated voltage 2500Vrms

EX-9017-MTCP

- Support Ethernet 10/100 Based-T communication
- Support protocol Modbus/TCP, TCP/IP, UDP, ICMP, ARP
- Support individual channel type setting for $\pm V$, $\pm mV$, mA(4-20)/(0-20)
- Support Linear Mapping
- Support Analog Input Alarm Setting & High/Low Alarm Digital Output
- Support isolated input channels
- Support two digital outputs(open collector)
- 16-bit resolution
- 2 Channels digital output
- 0.1% accuracy
- EX9000-MTCP series Utility/Software/Command

EX-9050-MTCP

- Support Ethernet 10/100 Based-T communication
- Support protocol Modbus/TCP, TCP/IP, UDP, ICMP, ARP
- Support 12*DI (Direct/Counter/Freq/Latch)
- Support Counter(Filter/Signal Width-H/L)/Frequency(Value Select/Latch(H/L) inputs
- Support Dry/Wet contact Digital input type
- Support 6*DO digital output(open collector)channels
- 1KHz Pulsed(Freq/Width-H/L/Counts)/Delay(H-L/L-H Width) output
- Support Isolated input and output channels
- EX9000-MTCP series Utility/Software/Command/Web Server Support

EX-9051-MTCP

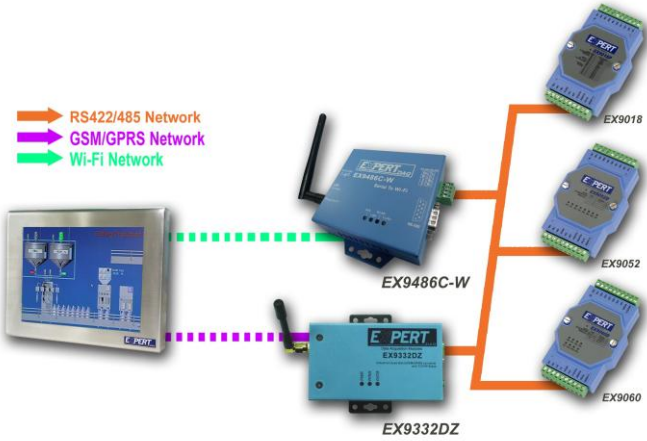
- Support Ethernet 10/100 Based-T communication
- Support protocol Modbus/TCP, TCP/IP, UDP, ICMP, ARP
- Support 12*DI (Direct/Counter/Freq/Latch) & 2*DO (Direct/Pulse/Delay Width)
- Support 2 channel Counter/ Frequency 4.5KHz counter (Filter/Signal Width-H/L)/4.5KHz Frequency(ValueSelect/Latch(H/L) inputs
- Support isolated input/output channel
- Support 1KHz Pulsed(Freq/Width-H/L/Counts)/Delay(H-L/L-H Width) output
- Support Dry/Wet contact Digital input type
- Support open collector type Digital output
- EX9000-MTCP series Utility/Software/Command/Web Server Support: Utility of EX9000-MTCP

Utility of EX9000-MTCP:

TCPDAQ(Ethernet I/O) ActiveX Control / TCPDAQ(Ethernet I/O)DLL API / TCPDAQ(Ethernet I/O)Data Structure / ASCII Command / MODBUS Command / Web Server



Wi-Fi & GSM/GPRS application



Simple gateway application

